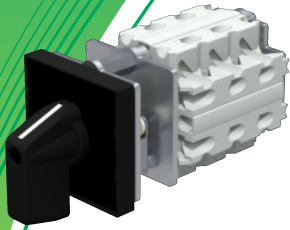
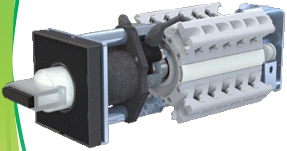


SECTION 2

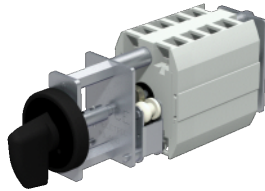
ONLINE CATALOGUE CONTROL COMPONENTS SPECIALISED SUB-STATIONS



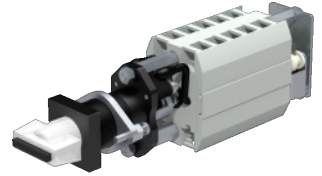
R16 - CONTROL SWITCH



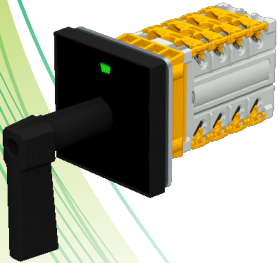
DR20 - DISCREPANCY SWITCH



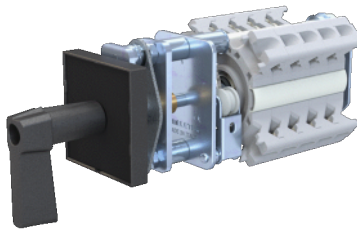
FRMC6 IP20 - MINIATURE CONTROL SWITCH



FRMM6 IP20 - MINIATURE CONTROL SWITCH



R10 - SPRING RETURN LAST
POSITION MECHANICAL INDICATOR



R20 - PUSH OR PULL OPERATE SWITCH



R20 - PADLOCKABLE

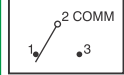
CONTROL COMPONENTS



CONTACT RATE: 5A with resistive load @ 125V AC or 28V DC
 ELECTRICAL LIFE: 50 000 make & break cycles at full load
 CONTACT RESISTANCE: 10mA max initial @ 2-4V DC,
 100mA for both coin silver and gold plated contacts.
 OPERATING STRENGTH: -30°C to 85°C

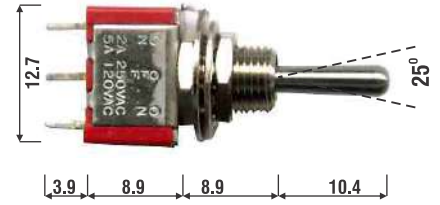
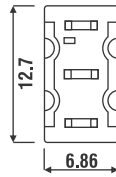
TYPE	MODEL				No. of POSITIONS
SPST	1-SP1TI	ON	NONE	ON	2
	1-SP3TI	ON	OFF	ON	3
	T8014	ON	OFF	ON	3
SPDT	1-SP4TI	(ON)	OFF	(ON)	3
	1-SP5TI	ON	OFF	(ON)	3
	TERMINAL COMMON	2-3	OPEN	2-1	

Schematic



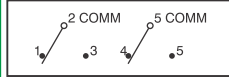
(ON) = MOMENTARY

Cutout: $\phi 6.35\text{mm}$

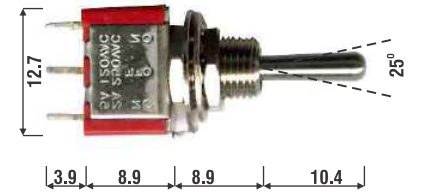
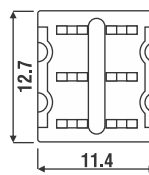


DPDT	1-DP1TI	ON	NONE	ON	2
	1-DP3TI	ON	OFF	ON	3
	TERMINAL COMMON	2-3 & 5-6	OPEN	2-1 & 5-4	

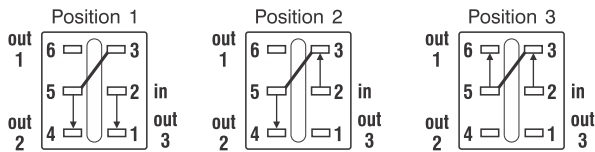
Schematic



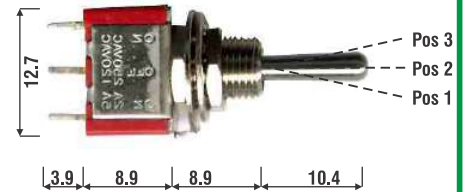
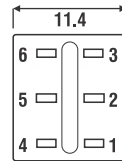
Cutout: $\phi 6.35\text{mm}$



3 WAY	T812	ON	ON	ON	3
	TERMINAL COMMON	2-3 & 5-6	2-3 & 5-4	2-1 & 5-4	

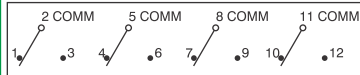


Cutout: $\phi 6.35\text{mm}$

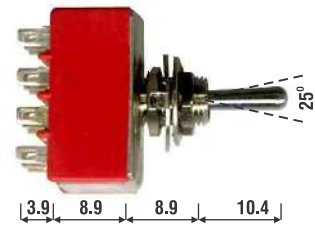
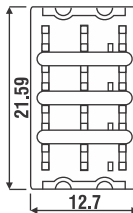


4PDT	T8401	ON	NONE	ON	2
	TERMINAL COMMON	2-3 & 5-6 8-9 & 11-12	OPEN	2-1 & 5-4 8-7 & 11-10	

Schematic



Cutout: $\phi 6.35\text{mm}$



MINIATURE TOGGLE SWITCHES

SPDT	TS-4	ON	NONE	ON	2
	TS-4A	ON	OFF	ON	3
	TERMINAL COMMON	2-3	OPEN	2-1	

Schematic



CONTACT RATE: 3A with resistive load @ 120V AC or 28V DC
 ELECTRICAL LIFE: 30 000 make & break cycles at full load
 CONTACT RESISTANCE: 20mW max initial @ 2-4V DC,
 100mA for both coin silver and gold plated contacts.
 OPERATING STRENGTH: -30°C to 85°C

Cutout: $\phi 5\text{mm}$



ACCESSORIES

T80T

Dress Nut



T1-R

Red rubber toggle cap



DS450....(Latching)

- Cutout: Ø10mm
- Colours: Red, White or Black
- Rating: 3A@125 & 1A@250V AC
- Contact: n/o

R84A....(Momentary)**R84B....(Latching)**

- Cutout: Ø10mm
- Colours: Red, White, Black or Silver
- Rating: 3A@125 & 1A@250V AC
- Contact: n/o

DS464 (Momentary)

- Cutout: Ø10mm
- Colour: Metallic button with a Black body
- Rating: 3A@125 & 1A@250V AC
- Contact: n/o

PUSHBUTTONS

**DS663....(Momentary)**

MIYAMA

- Non-illuminated type Pushbutton
- Shape: Circular
- Mounting Hole: Ø15mm
- Contact Configuration(pushbutton): SPST
- Operation: Lock free
- Terminal type: Soldering
- Current capacity@125Vac:1A
- Switch characteristics: Off-(On)
- Button Colours: Black, Red, White

**DS770 (Red Dot)****DS771 (White Dot)**

- Keylock Switch
- Shape: Circular
- Mounting Hole: Ø16mm
- Contact Configuration(key lock, selector): 1a
- With key: Present
- Notch Number: 2
- Suspend / Return: Suspend
- Terminal type: Soldering
- Current capacity@125Vac:3A
- Current capacity@250Vac:1A

Alternate

Two position:

**TA1275**

- Dimensions: 12x12mm - 7.5mm high
- Voltage: 50mA@12V DC



TACTILE SWITCHES

KTSC22R**TA1243**

12x12mm - 4.3mm high

TA067.5

6x6mm - 7.5mm high

TA069.5

6x6mm - 9.5mm high

**KTSC22R**

Voltage: 50mA@12V DC

- Red Tactile Lens



ADA16S....

DECA

Ø16mm Pushbutton Switches

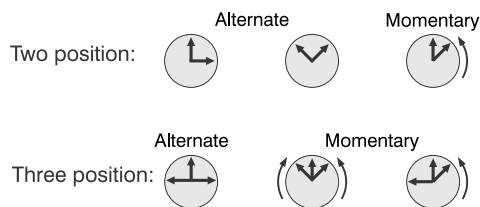
- Cutout: Ø16mm
- Head Shape: High Bezel - Round, Square or Rectangular
Flush Mounting - Round, Square or Rectangular
Overhanging Lens - Square or Rectangular
Full Guard - Square
Flush Mounting - Round, Square or Rectangular
- Available sizes: Rectangular - 18x24mm
Square - 18x18mm / 24x24mm
Round - Ø18mm
- Degree of protection: Ip65
- Colour: Green, White, Orange, Red, Blue or Yellow
- Functions: Alternate / Momentary
- Terminals: Soldering or Plug-in
- Electrical Rating 250V AV 5A(VDE) 125V AC 8A
- Lighting: LED / Incandescent / Neon



ADA16C....

Ø16mm Selector Switches

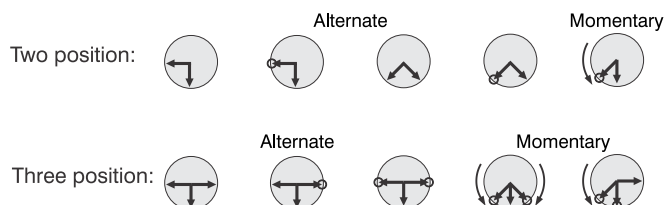
- Cutout: Ø16mm
- Head Shape: Standard
Square
Rectangular
Flange
- Available sizes: Rectangular - 18x24mm
Square - 18x18mm / 24x24mm (Flange)
Round / Standard - Ø18mm
- Degree of protection: Ip65
- Colour: Green, White, Black, Red, Blue or Yellow
- Functions: Alternate / Momentary
- Terminals: Soldering or Plug-in
- Electrical Rating 250V AV 5A(VDE) 125V AC 8A
- Lighting: LED / Incandescent / Neon



ADA16K....

Ø16mm Key Selector Switches

- Cutout: Ø16mm
- Head Shape: Standard
Square
Rectangular
Flange
- Available sizes: Rectangular - 18x24mm
Square - 18x18mm / 24x24mm
Round - Ø18mm
- Degree of protection: Ip65 soldering / plug-in
Ip40 plug-in
- Functions: Alternate / Momentary
- Terminals: Soldering or Plug-in
- Electrical Rating 250V AV 5A(VDE) 125V AC 8A



D16PL....

DECA

Ø16mm Indicator Pushbutton

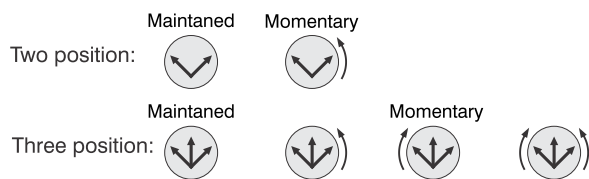
- Cutout: Ø16mm
- Shape: Round, Square or Rectangle
- Degree of protection: IP40 / Ip65
- Colour: Blue, Green, Blue, Red, White or Yellow
- Voltage: Lamp 14, 28, 48, 50 & 60 V AC/DC
 - : Neon 110, 220 V AC Red
 - : Flourescent 110, 220 V AC Green
 - : LED 12, 24 7 48 VAC/DC (6 chip)



C1C....

Ø16mm Selector Switches

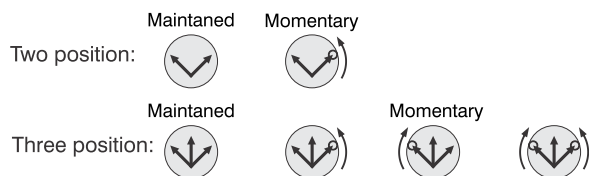
- Cutout: Ø16mm
- Shape: Round, Square or Rectangle
- Degree of protection: IP40 / Ip65
- Handle Colour: Blue, Green, Black, Red, White or Yellow
- Contacts: DPDT / SPDT
- Functions: Maintaned / Momentary



C1K....

Ø16mm Key Switches

- Cutout: Ø16mm
- Shape: Round, Square or Rectangle
- Degree of protection: IP40 / Ip65
- Key: Standard
- Contacts: DPDT / SPDT
- Functions: Maintaned / Momentary
- Key non-removable positions: (o)



PL16....(Ø25mm metal/plastic ring)

DECA

Ø22mm Indicator Pushbutton

PL16....(Ø29mm metal/plastic ring)

- Cutout: Ø22mm
- Switch head: Ø25mm or Ø29mm metal/plastic ring
- Illuminated or non-illuminated
- Contact: Soldering type
- Degree of protection: Ip65
- Body material: High grade temperature resistant thermoplastic
 - Contact housing electrical high grade thermoplastic
- Mechanical life: >2 million operations
- Functions: Momentary or alternate action 1-4 poles
- Electrical Rating: 250V AC 5A, 250V DC 0.2A, 125V AC 8A, 24V DC 6A



D16....(metal/plastic ring)

- Cutout: Ø22mm
- Switch head: Ø25mm & Ø29mm plastic or metal
- Lens Colour: Green, Red or Yellow
- Contact: Socket type
- Degree of protection: Ip65
- Body material: High grade temperature resistant thermoplastic
Contact housing electrical high grade thermoplastic
- Electrical Rating: 6V AC/DC 200mA, 14V AC/DC 80mA, 28V AC/DC 40mA



A01ES

APEM

EMERGENCY STOP SWITCH

A01ES-D series emergency stops is ergonomically designed for the users. With 4 actuator styles featuring a compact and modern design (dia.16mm), these emergency stops are safe and easy to operate (Push to shut-off, twist to release) and feature green locked/unlocked status indicators for a quick and easy visual status control. The A01ES-D series is certified EN60947-5-5 and is IP65 front sealed

- Cutout: φ16mm
- Single and double pole positive break
- Maximum current/voltage rating : AC-15, 1,5A 250VAC, 6A 250VAC
- Operating temperature : -20°C / +55°C IP65 front panel sealing
- Electrical and mechanical life : 6050 cycles



A01....

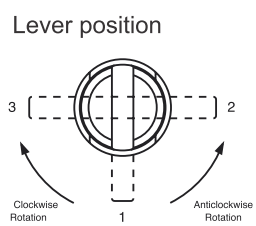
SELECTION SWITCHES

A range of 16mm panel mounting key switches and selector switches, available latching and momentary with custom engraved actuators, over moulded key and many accessories.

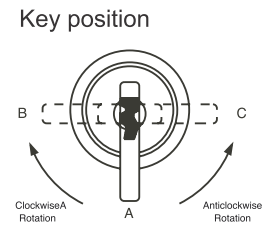
- Cutout: φ16mm
- Colour: Grey
- Current/Voltage: 10mA 5VAC min, 6A 250VAC, 6A 12VDC
- Panel sealed to Ip65
- Single pole to four pole changeover
- Push on tab terminals
- Environmental protection : Ip65
- Modular construction
- Electrical life : 50.000 cycles min.
- Screen engraving or insert-able legends on request
- Approvals: UL, VDE



Operator		+	Switch block			
Pole	Bezel	Description	Short lever	Long lever	No of poles	Part No
1 or 2	<input type="checkbox"/>	2 pos. maintained	A019201	A019101	Single pole	A0151B
1 or 2	<input type="checkbox"/>	2 pos. momentary	A019202	A019102	Double pole	A0152B
3 or 4	<input type="checkbox"/>	2 pos. maintained	A019203	A019103	Three pole	A0155B
3 or 4	<input type="checkbox"/>	2 pos. momentary	A019204	A019104	Four pole	A0153B
1 or 2	<input type="checkbox"/>	3 pos. maintained	A019205	A019105		
1 or 2	<input type="checkbox"/>	3 pos. momentary	A019206	A019106		
1 or 2	<input type="checkbox"/>	3 pos. mainL, momR	A019207	A019107		
1 or 2	<input type="checkbox"/>	3 pos. momL, mainR	A019208	A019108		
1 or 2	<input type="checkbox"/>	2 pos. maintained	A019401	A019301		
1 or 2	<input type="checkbox"/>	2 pos. momentary	A019402	A019302		
3 or 4	<input type="checkbox"/>	2 pos. maintained	A019403	A019303		
3 or 4	<input type="checkbox"/>	2 pos. momentary	A019404	A019304		
1 or 2	<input type="checkbox"/>	3 pos. maintained	A019405	A019305		
1 or 2	<input type="checkbox"/>	3 pos. momentary	A019406	A019306		
1 or 2	<input type="checkbox"/>	3 pos. mainL, momR	A019407	A019307		
1 or 2	<input type="checkbox"/>	3 pos. momL, mainR	A019408	A019308		
1 or 2	<input type="checkbox"/>	2 pos. maintained	A019601	A019501		
1 or 2	<input type="checkbox"/>	2 pos. momentary	A019602	A019502		
3 or 4	<input type="checkbox"/>	2 pos. maintained	A019603	A019503		
3 or 4	<input type="checkbox"/>	2 pos. momentary	A019604	A019504		
1 or 2	<input type="checkbox"/>	3 pos. maintained	A019605	A019505		
1 or 2	<input type="checkbox"/>	3 pos. momentary	A019606	A019506		
1 or 2	<input type="checkbox"/>	3 pos. mainL, momR	A019607	A019507		
1 or 2	<input type="checkbox"/>	3 pos. momL, mainR	A019608	A019508		



Operator		+	Switch block			
Pole	Bezel	Description	Part No.	Key removable	No of poles	Part No
1 or 2	<input type="checkbox"/>	2 pos. maintained	A018101	A-C	Single pole	A0151B
1 or 2	<input type="checkbox"/>	2 pos. momentary	A018102	A	Double pole	A0152B
3 or 4	<input type="checkbox"/>	2 pos. maintained	A018103	A-C	Three pole	A0155B
3 or 4	<input type="checkbox"/>	2 pos. momentary	A018104	A	Four pole	A0153B
1 or 2	<input type="checkbox"/>	3 pos. maintained	A018105	A-B-C		
1 or 2	<input type="checkbox"/>	3 pos. momentary	A018106	A		
1 or 2	<input type="checkbox"/>	3 pos. mainL, momR	A018107	A-B		
1 or 2	<input type="checkbox"/>	3 pos. momL, mainR	A018108	A-C		
1 or 2	<input type="checkbox"/>	2 pos. maintained	A018201	A-C		
1 or 2	<input type="checkbox"/>	2 pos. momentary	A018202	A		
3 or 4	<input type="checkbox"/>	2 pos. maintained	A018203	A-C		
3 or 4	<input type="checkbox"/>	2 pos. momentary	A018204	A		
1 or 2	<input type="checkbox"/>	3 pos. maintained	A018205	A-B-C		
1 or 2	<input type="checkbox"/>	3 pos. momentary	A018206	A		
1 or 2	<input type="checkbox"/>	3 pos. mainL, momR	A018207	A-B		
1 or 2	<input type="checkbox"/>	3 pos. momL, mainR	A018208	A-C		
1 or 2	<input type="checkbox"/>	2 pos. maintained	A018301	A-C		
1 or 2	<input type="checkbox"/>	2 pos. momentary	A018302	A		
3 or 4	<input type="checkbox"/>	2 pos. maintained	A018303	A-C		
3 or 4	<input type="checkbox"/>	2 pos. momentary	A018304	A		
1 or 2	<input type="checkbox"/>	3 pos. maintained	A018305	A-B-C		
1 or 2	<input type="checkbox"/>	3 pos. momentary	A018306	A		
1 or 2	<input type="checkbox"/>	3 pos. mainL, momR	A018307	A-B		
1 or 2	<input type="checkbox"/>	3 pos. momL, mainR	A018308	A-C		



**RXJL5** (Charcoal)

- Pilot Light with Faston terminals 2.8x0.8mm
- Lenses and nameplates (separate)
- Mounting diameter: Ø22.3 mm
- Degree of protection: Ip65
- Protection class: II (protective insulation)
- Shape: round
- Connection type: flat-plug connections
- Illumination: Yes
- Lamp socket: T5,5K
- With labelling option: Yes
- Front bezel: charcoal

**QXJL5** (Charcoal) / **QXJL5DG** (Black)

- Pilot Light with Faston terminals 2.8x0.8mm
- Lenses and nameplates (separate)
- Mounting diameter: 24x24 mm
- Degree of protection: Ip65
- Protection class: II (protective insulation)
- Shape: Square
- Connection type: flat-plug connections
- Illumination: Yes
- Lamp socket: T5,5K
- With labelling option: Yes
- Front bezel: Charcoal / Black

**QXDMDG IP67** (Charcoal)

- Short-stroke membrane Pushbutton Head
- with transparent silicone cap, down to -50 ± 0 C
- with illuminating option, blank nameplate included.
- Category: Pushbutton Heads (momentary/push-push)
- Mounting diameter: Ø 16 mm
- Degree of protection: Ip67
- Protection class: II (protective insulation)
- Shape: square
- Illumination: Yes
- Travel: 3 mm
- With labelling option: Yes
- Front bezel: charcoal

**RXJT** (Charcoal)

- Pushbutton Head
- Lenses and nameplates to be ordered separately
- Category: Pushbutton Heads (momentary/push-push)
- Mounting diameter: Ø 22.3 mm
- Degree of protection: Ip65
- Protection class: II (protective insulation)
- Shape: round
- Illumination: Yes
- Travel: 6 mm
- With labelling option: Yes
- Front bezel: charcoal

**QXT** (Black)

- Pushbutton Head
- 24 x 24 mm on request
- Category: Pushbutton Heads (momentary/push-push)
- Mounting diameter: Ø 16 mm
- Degree of protection: Ip65
- Protection class: II (protective insulation)
- Shape: square
- Illumination: Yes
- Travel: 6 mm
- With labelling option: Yes
- Front bezel: black

**QXJD** (Black) (Short-stroke pushbutton head)

- Lenses and nameplates to be ordered separately
- Category: Pushbutton Heads (momentary/push-push)
- Mounting diameter: 24 x 24 mm
- Degree of protection: Ip65
- Protection class: II (protective insulation)
- Shape: square
- Illumination: Yes
- Travel: 3 mm
- With labelling option: Yes
- Front bezel: black

**QXJT** (Black)

- Category: Pushbutton Heads (momentary/push-push)
- Mounting diameter: 24 x 24 mm
- Degree of protection: Ip66
- Protection class: II (protective insulation)
- Shape: square
- Illumination: Yes
- Travel: 6 mm
- With labelling option: Yes
- Front bezel: black

**QXJD** (Black) (Short-stroke pushbutton head)

- Two prisms reflect the light from the center to a window at the edge of the lens.
- Lenses and nameplates to be ordered separately
- Category: Pushbutton Heads (momentary/push-push)
- Mounting diameter: 24 x 24 mm
- Degree of protection: Ip65
- Protection class: II (protective insulation)
- Shape: square
- Illumination: Yes
- Travel: 6 mm with labelling option: Yes
- front bezel: black





KEY SWITCHES

RXJL5 (Charcoal)

- Including two keys, other lock types on request
- Mounting diameter: Ø 22.3 mm
- Degree of protection: Ip65
- Protection class: II (protective insulation)
- Shape: round
- Switching function: maintained action
- Illumination: No
- With labelling option: No
- front bezel: charcoal



RXJSSA-12E 3 POS RXJSSA-17E 2 POS



Withdrawn: All

Left

QXJSSA... (Charcoal)

- Including two keys, other lock types on request
- Mounting diameter: 24 x 24 mm
- Degree of protection: Ip65
- Protection class: II (protective insulation)
- Shape: square
- Switching function: maintained action
- Illumination: No
- With labelling option: No
- Front bezel: black



QXJSSA-13E 3 POS QXJSSA-14E 2 POS



Withdrawn: Center

Top

QXJSSKA-17E

- Including two keys, other lock types on request
- Mounting diameter: 24 x 24 mm
- Degree of protection: Ip65
- Protection class: II (protective insulation)
- Shape: square
- Switching function: maintained action
- Illumination: No
- With labelling option: No
- Front bezel: black



QXJSSA-17E 2 POS



Withdrawn: Left



SCHLEGEL boasts an extensive range of switches with varying features. Suitable for any application or specific requirement. For more info contact us or visit www.schlegel.com.sg.



EMERGENCY PUSHBUTTONS

QXV (Black)

- Cutout: φ16mm
- Rating: Ip65
- Contacts: See below
- Colour: Red



RXV (Charcoal)

- Cutout: φ16mm
- Rating: Ip65
- Contacts: See below
- Colour: Red



RXJV (Charcoal)

- Cutout: φ22mm (Flush mount)
- Rating: Ip65
- Contacts: See below
- Colour: Red



CONTACT BLOCKS



RXJL5 (Charcoal)

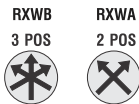
- Made of stainless steel V4A (1.4404)
- The housing edging is supplied in green-GN, red-RT, blue-BL, yellow-GB, black-SW, white-WS or charcoal-DG (clear luminous surface). Add code letter to type number, e.g. RVATL_RT.
- Category: Pushbutton Heads (momentary/push-push)
- Mounting diameter: Ø 22.3 mm
- Degree of protection: IP69K
- Protection class: II (protective insulation)
- Shape: round
- Illumination: Yes
- Travel: 6 mm
- With labelling option: No
- Front bezel: stainless steel, polished



SELECTOR SWITCHES

RX...

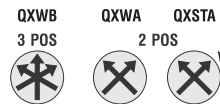
- Mounting diameter: Ø 16 mm
- Degree of protection: Ip65
- Protection class: II (protective insulation)
- Shape: round
- Switching function: momentary action
- Illumination: No
- With labelling option: No
- Front bezel: charcoal



Spring return: None None

QX...

- 24 x 24 mm on request
- Mounting diameter: Ø 16 mm
- Degree of protection: Ip65
- Protection class: II (protective insulation)
- Shape: square
- Switching function: momentary action
- Illumination: No
- With labelling option: No
- Front bezel: black



Spring return: None None Right

RXJ...

- Mounting diameter: Ø 22.3 mm
- Degree of protection: Ip65
- Protection class: II (protective insulation)
- Shape: round
- Switching function: maintained action
- Illumination: No
- With labelling option: No
- Front bezel: charcoal



Spring return: All None None

QXJ...

- Mounting diameter: 24 x 24 mm
- Degree of protection: Ip65
- Protection class: II (protective insulation)
- Shape: square
- Switching function: momentary action
- Illumination: No
- With labelling option: No
- Front bezel: black

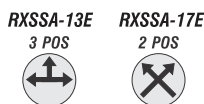


Spring return: None None Right

KEY SWITCHES

RXSSA...

- Including two keys, other lock types on request
- Mounting diameter: Ø 16 mm
- Degree of protection: Ip65
- Protection class: II (protective insulation)
- Shape: round
- Switching function: maintained action
- Illumination: No
- With labelling option: No
- Front bezel: charcoal



Withdrawn: Center Left

QXJD (Black) (Short-stroke pushbutton head)

- Key Actuator, momentary
- Mounting diameter: Ø 16 mm
- Degree of protection: Ip65
- Protection class: II (protective insulation)
- Shape: round
- Illumination: No
- With labelling option: No
- Front bezel: charcoal



Withdrawn: Top

The entire Schlegel range is far too big for us to put into our catalogue. They have an extensive range of products which have won many design awards. To view their entire range please visit their website : www.Schlegel.biz Schlegel products embody an extremely high standard of quality. Their certification of their quality assurance system as per ISO 9001 is confirmation of their desire to pursue the highest quality objectives & their success in doing so. Their quality motto is:

"If you stop trying to better yourself, you're no longer any good"

EMERGENCY STOPS



PUSHBUTTONS



SELECTOR AND KEY SWITCHES

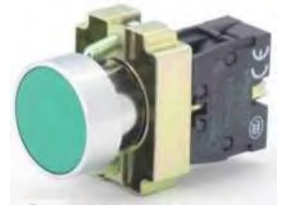


BA..

XB2 Standard Flat Head Pushbutton

- Operational temp: -5°C~+40°C
- Power frequency withstand Voltage: 2500VAC, 1min
- Contact resistance: ≤ 50mΩ
- Mechanical durability: mom 1x10 / others 2.5 x 10
- Electrical durability: 5x10
- Degree of protection: IP40

BA11 - White N/O
BA21 - Black N/O
BA31 - Green N/O
BA42 - Red N/C
BA51 - Yellow N/O
BA61 - Blue N/O



BW...

Illuminated Pushbutton

- Operational temp: -5°C~+40°C
- Power frequency withstand Voltage: 2500VAC, 1min
- Contact resistance: ≤ 50mΩ
- Mechanical durability: mom 1x10 / others 2.5 x 10
- Electrical durability: 5x10
- Degree of protection: IP40

Bw3161 - White, direct connect/
N/O, 6 - 380V
Bw3361 - Green, direct connect/
N/O, 6 - 380V
Bw3461 - Red, direct connect/
N/O, 6 - 380V
Bw3561 - Yellow, direct connect/
N/O, 6 - 380V
Bw3661 - Blue, direct connect/
N/O, 6 - 380V

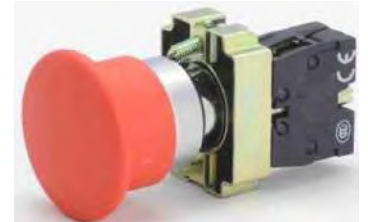


BC42 / BR42

Emergency Stop Impulse

- Operational temp: -5°C~+40°C
- Power frequency withstand Voltage: 2500VAC, 1min
- Contact resistance: ≤ 50mΩ
- Mechanical durability: mom 1x10 / others 2.5 x 10
- Electrical durability: 5x10
- Degree of protection: IP40

BC42 - φ40, Red, N/C
BR42 - φ60, Red, N/C



BS...

Twist to Release

- Operational temp: -5°C~+40°C
- Power frequency withstand Voltage: 2500VAC, 1min
- Contact resistance: ≤ 50mΩ
- Mechanical durability: mom 1x10 / others 2.5 x 10
- Electrical durability: 5x10
- Degree of protection: IP40

BS442 - φ30, Red, N/C
BS542 - φ40, Red, N/C
BS642 - φ60, Red, N/C



BD..

Short Handle Sector Switch

- Operational temp: -5°C~+40°C
- Power frequency withstand Voltage: 2500VAC, 1min
- Contact resistance: ≤ 50mΩ
- Mechanical durability: mom 1x10 / others 2.5 x 10
- Electrical durability: 5x10
- Degree of protection: IP40

BD21 - 2-pos, stay put, N/O
BD33 - 3-pos, stay put, N/O + N/O
BD41 - 2-pos, impulse, N/O
BD53 - 3-pos, impulse, N/O + N/O



BJ..

Long Handle Sector Switch

- Operational temp: -5°C~+40°C
- Power frequency withstand Voltage: 2500VAC, 1min
- Contact resistance: ≤ 50mΩ
- Mechanical durability: mom 1x10 / others 2.5 x 10
- Electrical durability: 5x10
- Degree of protection: IP40

BJ21 - 2-pos, stay put, N/O
BJ33 - 3-pos, stay put, N/O + N/O
BJ41 - 2-pos, impulse, N/O
BJ53 - 3-pos, impulse, N/O + N/O



BG..

XB2

Key Switch

- Operational temp: -5°C≈+40°C
- Power frequency withstand Voltage: 2500VAC, 1min
- Contact resistance: ≤ 50mΩ
- Mechanical durability: mom 1x10 / others 2.5 x 10
- Electrical durability: 5x10
- Degree of protection: IP40

BG21 - 2-pos, stay put, N/O
Bg33 - 3-pos, stay put, N/O + N/O
BG41 - 2-pos, impulse, N/O
Bg53 - 3-pos, impulse, N/O + N/O



BW...

Dual Illuminated Pushbutton

- Operational temp: -5°C≈+40°C
- Power frequency withstand Voltage: 2500VAC, 1min
- Contact resistance: ≤ 50mΩ
- Mechanical durability: mom 1x10 / others 2.5 x 10
- Electrical durability: 5x10
- Degree of protection: IP40

BW8465
 Red & Green, N/O + N/C
 Direct connect
 6 - 380V
 (BA9S Lamp Holder)
 (See pg1.8 for LED options).



Control Stations

B1

- Operation hole: Single
- Operation diameter: 22mm
- Material: ABS
- Colour: Yellow/White & Dark Grey/White
- IP grade: IP65



B2

- Operation hole: Double
- Operation diameter: 22mm
- Material: ABS
- Colour: Yellow/White & Dark Grey/White
- IP grade: IP65



B3

- Operation hole: Triple
- Operation diameter: 22mm
- Material: ABS
- Colour: Yellow/White & Dark Grey/White
- IP grade: IP65



J1

- Operation hole: Single
- Operation diameter: 22mm
- Material: ABS
- Colour: Yellow & Black
- IP grade: IP65



BE...

Stackable Contact Blocks

Rating: 2.5A@380VAC
 4.5A@220VAC
 6A@110VAC
 0.3A@220VDC

BE101 - N/O Contact Block
BE102 - N/C Contact Block

L1...(contact blocks for control stations)

Rating: 2.5A@380VAC
 4.5A@220VAC
 6A@110VAC
 0.3A@220VDC

L1111 - N/O Contact Block
L1121 - N/C Contact Block



FEED THROUGH

TERMINAL BLOCKS



FUSE

ESKOM APPROVED



DISCONNECTING

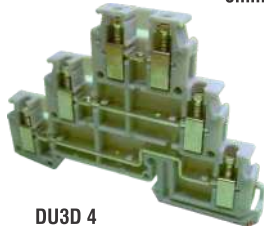






"U" SERIES

EARTH



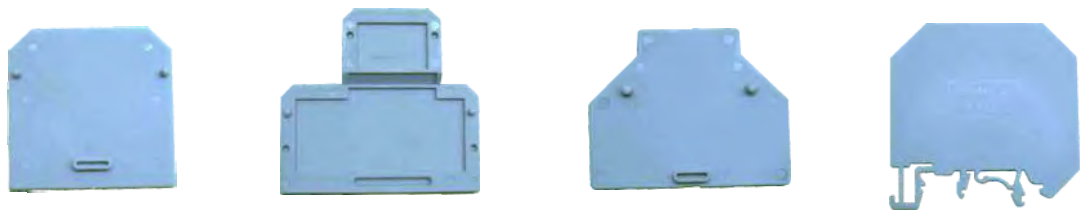
TERMINAL BLOCKS

MULTI LEVEL (TRIPLE DECK)	STUD TYPE	MICRO	POWER (BUS BAR)	
6mm	13mm	6mm	37mm	37mm
				
DU3D 4 500V/20A/2.5sq mm/0.5Nm	KBT M4/5 800V/76A/16sq mm/2Nm 1000V/57A/10sq mm/1.2Nm	SUT 4 500V/24A/2.5sq mm/0.5Nm	DPBC 70 1000V/192A/70sq mm/ 3.0/3.5(6.0)Nm Screwdriver(wrench)	DPBB 70/120 1000V/192A/70sq mm/3Nm Screwdriver 1000V/269A/120sq mm/6Nm Screwdriver

ACCESSORIES - End Plates/Barrier Plates

Elmex **End Plates** are mainly used to cover the last Terminal Block to insulate the live metal components. They are available for all types Terminal Blocks in standard and non standard colours.

Elmex **Barrier Plates** are used to isolate adjacent terminals electrically, so as to maintain the required creepage and clearance values. Apart from this function they are also used for identification and segregation of terminal groups.



TERMINAL TYPE	END PLATES	TERMINAL TYPE	END PLATES
KUT 2.5	KPNS	KUDF 4, KUDF 4A, KUDF 4D	EPDF
KUT 4, KST 4U WS, KUT 6, KUT 10	KP X	KUDDF 4, KUDDF 4A, KUDDF4 D	EPDDF
KST 6WS	KSP6WS	SUT 1.5	ES 2
KULT 1	KPSL	SUT 4	ES 4
KUT 16	KP Y	CET 4N	EP MN
KUT 25	KP T	NET 4	EP MN
KUDD 4	KPDD	MBT 4	MP1
KU2D 4, KUSD 4S	EPDD	UBT 2.5N, UBT 4, UBT 6, UBT 10	UP X
DU3D 4	DP3D	UBT 2.5N	UPNS
DUSD 4	DPSD	UBT 4 TWIN	UP TWIN
KUDT 4	EPDT	UBDD 4	UPDD
KUTSD 6	KPSD	DCC 2.5T	EPDCC 2T
KSTD 6WS	KPSDWS	DCC 4T	EPDCC 4T
KUTD 10	KPTD	DCC 6T	EPDCC 6T

TERMINAL TYPE	BARRIER PLATES	TERMINAL TYPE	BARRIER PLATES (With Foot)
KUT 2.5	KB M	KUT 2.5, KUT 4U WS, KUT 6	KBXF
KUT 4, KST 4U WS, KUT 6, KUT 10	KBX	KST 6U WS, KUT 10, KUDT 4	
KUT 16	KB Y	DBK 3, DBK 8, DBK 1X2, DBK 1X4	
KUT 25	KB T	DBK 1X8, FDBK 3, FDBK 8	
UBT 2.5N, UBT 4, UBT 6, UBT 10	UB X	FDBK 1X2, FDBK 1X8, ET 6, ET 10	
DCC 2.5T	PPDCC 2T	UBT 2.5N, UBT 4, UBT 6, UBT 10	
DCC 4T	PPDCC 4T	KULT 1, KUT 16, KUT 25, KUT 35	KBZF
DCC 6T	PPDCC 6T	KUDF 4, KUDF 4A, KUDF 4D, ET 16, ET 35	

END CLAMPS & MOUNTING RAILS

End Clamps: Also referred to as End Stoppers. Various types of End Clamps are available to suite different channels/din rail. End Clamps can also be used as "spacers" to increase creepage distance between two terminals. End Clamps are available in metallic & polyamide 66.

SCKN - 8mm **SCUN** - 9.5mm **SCUDD** - 10mm **SCUSL** - 8mm

Mounting Rail: Also referred to as Din Rail is available in standard 2000mm lengths. Standard Aluminium or Slotted Steel.



PUSHBUTTONS

YS-F...(Flat Head Non-Illuminated)

- Pushbutton: Flat Head
- Cutout: Ø22mm
- Contact Blocks: 1N/O+1N/C, 2N/O+2N/C, 3N/O+3N/C
- Degree of protection: Ip65
- Colours: White, Black, Green, Red, Yellow, Blue



YS-H...(Protruding Head Non-Illuminated)

- Pushbutton: Flat Head
- Cutout: Ø22mm
- Contact Blocks: 1N/O+1N/C, 2N/O+2N/C, 3N/O+3N/C
- Degree of protection: Ip65
- Colours: Black, Green, Red, Yellow, Blue



YS-MS...(Mushroom Head Ø30mm Non-Illuminated)

- Pushbutton: Ø30mm Mushroom Head
- Cutout: Ø22mm
- Contact Blocks: 1N/O+1N/C, 2N/O+2N/C, 3N/O+3N/C
- Degree of protection: Ip65
- Colours: Red



YS-M...(Mushroom Head Ø37mm Non-Illuminated)

- Pushbutton: Ø37mm Mushroom Head
- Cutout: Ø22mm
- Contact Blocks: 1N/O+1N/C, 2N/O+2N/C, 3N/O+3N/C
- Degree of protection: Ip65
- Colours: Red



YS-KL...(Lockable Mushroom Head Non-Illuminated)

- Latching Mushroom Head automatically locked in the "in" position released with key
- Cutout: Ø22mm
- Contact Blocks: 1N/O+1N/C, 2N/O+2N/C, 3N/O+3N/C
- Degree of protection: Ip65
- Colours: Red



YS-MX...(Mushroom Head Ø50mm Non-Illuminated)

- Pushbutton: Ø50mm Mushroom Head
- Cutout: Ø22mm
- Contact Blocks: 1N/O+1N/C, 2N/O+2N/C, 3N/O+3N/C
- Degree of protection: Ip65
- Colours: Red



YS-PF...(Flat Head Illuminated)

- Illuminated Pushbutton: Flat Head
- 220V Neon Bulb
- Cutout: Ø22mm
- Contact Blocks: 1N/O+1N/C, 2N/O+2N/C, 3N/O+3N/C
- Degree of protection: Ip65
- Colours: Green, Red, Yellow, Blue, Clear



YS-PH...(Protruding Head Illuminated)

- Illuminated Pushbutton: Flat Head
- 220V Neon Bulb
- Cutout: Ø22mm
- Contact Blocks: 1N/O+1N/C, 2N/O+2N/C, 3N/O+3N/C
- Degree of protection: Ip65
- Colours: Green, Red, Yellow, Blue, Clear



YS-D...(Selector Switch Short Handle)

- Selector Switch: Short Handle
- Cutout: Ø22mm
- Contact Blocks: 2P - 1N/O+1N/C, 2N/O+2N/C, 3P - 2N/O, 4N/O
- Degree of protection: Ip65
- Colours: Black, Green, Red,



YS-J...(Selector Switch Long Handle)

- Selector Switch: Long Handle
- Cutout: Ø22mm
- Contact Blocks: 2P - 1N/O+1N/C, 2N/O+2N/C, 3P - 2N/O, 4N/O
- Degree of protection: Ip65
- Colours: Black, Green, Red,



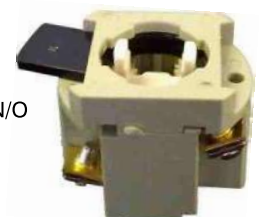
YS-K...(Key Switch)

- Key switch
- Cutout: Ø22mm
- Contact Blocks: 2P - 1N/O+1N/C, 2N/O+2N/C, 3P - 2N/O, 4N/O
- Degree of protection: Ip65
- Colours: Black, Green, Red,



Contact Blocks

- C-22: Standard
1N/O+1N/C, 2N/O+2N/C, 3N/O+3N/C
- UC-22: Universal
1N/O+1N/C, 2N/O, 2N/C, 2N/O+2N/C, 4N/O
- P-22: Lamp Holder Ba9's
1N/O+1N/C, 2N/O+2N/C, 3N/O+3N/C



AR series controlling switch, it is possible to apply 2 types ($\varnothing 22$ / $\varnothing 25$) panel cutout dimension and in case of using the guide bracket, it is even possible to use it with the $\varnothing 30$ hole. Various functions and designs have made the selection choice wider and attachment and detachment of the actuator/switch part became very simple.

ARP-F

- Cutout: $\varnothing 22$ mm
- Actuator Type: Flush
- Lamp Voltages: 110 or 220V AC with transformer
Direct Lamp holder for other voltages
- Colours: Red, Green, Yellow, Blue or White

**ARP-R**

- Cutout: $\varnothing 22$ mm
- Actuator Type: Roulette
- Lamp Voltages: 110 or 220V AC with transformer
Direct Lamp holder for other voltages
- Colours: Red, Green, Yellow, Blue or White

**ARF-F (FULL GUIDE)**

- Rated voltage: 500V a.c. 50/60Hz
- Rated current: 5A 250V 50/60Hz
- Applying categories: AC-12, AC-13, AC-14, AC-15
- Insulation resistance: 100M Ω min
- Dielectric strength: 2000V a.c. for 1min
- Colours: Red, Green, Yellow, Blue or Black

**ARF-B (RUBBER COVER)**

- Rated voltage: 500V a.c. 50/60Hz
- Rated current: 5A 250V 50/60Hz
- Applying categories: AC-12, AC-13, AC-14, AC-15
- Insulation resistance: 100M Ω min
- Dielectric strength: 2000V a.c. for 1min
- Colours: Red, Green, Yellow, Blue or Black

**ARF-P (PROTRUDING ACTUATOR)**

- Rated voltage: 500V a.c. 50/60Hz
- Rated current: 5A 250V 50/60Hz
- Applying categories: AC-12, AC-13, AC-14, AC-15
- Insulation resistance: 100M Ω min
- Dielectric strength: 2000V a.c. for 1min
- Colours: Red, Green, Yellow, Blue or Black

**ARF-G (FULL-GUIDE) PROTRUDING ACTUATOR**

- Rated voltage: 500V a.c. 50/60Hz
- Rated current: 5A 250V 50/60Hz
- Applying categories: AC-12, AC-13, AC-14, AC-15
- Insulation resistance: 100M Ω min
- Dielectric strength: 2000V a.c. for 1min
- Colours: Red, Green, Yellow, Blue or Black

**ARF-H (HALF-GUIDE) PROTRUDING ACTUATOR**

- Rated voltage: 500V a.c. 50/60Hz
- Rated current: 5A 250V 50/60Hz
- Applying categories: AC-12, AC-13, AC-14, AC-15
- Insulation resistance: 100M Ω min
- Dielectric strength: 2000V a.c. for 1min
- Colours: Red, Green, Yellow, Blue or Black

**ARF-S (PUSHBUTTON SELECTOR SWITCH)**

- Rated voltage: 500V a.c. 50/60Hz
- Rated current: 5A 250V 50/60Hz
- Applying categories: AC-12, AC-13, AC-14, AC-15
- Insulation resistance: 100M Ω min
- Dielectric strength: 2000V a.c. for 1min
- Colours: Black

**ARX-P Protruding Actuator**

- Rated voltage: 500V a.c. 50/60Hz
- Rated current: 5A 250V 50/60Hz
- Applying categories: AC-12, AC-13, AC-14, AC-15
- Insulation resistance: 100M Ω min
- Dielectric strength: 2000V a.c. for 1min
- Colours: Red or Green

**ARX-G (Full-Guide) Protruding Actuator**

- Rated voltage: 500V a.c. 50/60Hz
- Rated current: 5A 250V 50/60Hz
- Applying categories: AC-12, AC-13, AC-14, AC-15
- Insulation resistance: 100M Ω min
- Dielectric strength: 2000V a.c. for 1min
- Colours: Red, Green, Yellow, Blue or White



AR series controlling switch, it is possible to apply 2 types ($\varnothing 22 / \varnothing 25$) panel cutout dimension and in case of using the guide bracket, it is even possible to use it with the $\varnothing 30$ hole. Various functions and designs have made the selection choice wider and attachment and detachment of the actuator/switch part became very simple.

ARX-H (Half-Guide) Protruding Actuator

- Rated voltage: 500V a.c. 50/60Hz
- Rated current: 5A 250V 50/60Hz
- Applying categories: AC-12, AC-13, AC-14, AC-15
- Insulation resistance: 100M Ω min
- Dielectric strength: 2000V a.c. for 1min
- Colours: Red, Green or Yellow

**SELECTOR SWITCHES****ARS-L (Long handle)**

- Rated voltage: 500V a.c. 50/60Hz
- Rated current: 5A 250V 50/60Hz
- Applying categories: AC-12, AC-13, AC-14, AC-15
- Insulation resistance: 100M Ω min
- Dielectric strength: 2000V a.c. for 1min
- Colours: Red, Green or Yellow

**ARS-S (Short handle) Non-Illuminated**

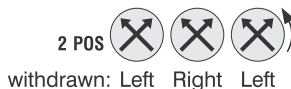
- Rated voltage: 500V a.c. 50/60Hz
- Rated current: 5A 250V 50/60Hz
- Applying categories: AC-12, AC-13, AC-14, AC-15
- Insulation resistance: 100M Ω min
- Dielectric strength: 2000V a.c. for 1min
- Colours: Red, Green or Yellow

**ILLUMINATED SELECTOR SWITCH****ART (Short handle) Illuminated**

- Cutout: $\varnothing 22$ mm
- Rated voltage: 500V a.c. 50/60Hz
- Rated current: 5A 250V 50/60Hz
- Applying categories: AC-12, AC-13, AC-14, AC-15
- Insulation resistance: 100M Ω min
- Dielectric strength: 2000V a.c. for 1min
- Colours: Red, Green or Yellow
- Lamp Voltages: 110 or 220V AC with a transformer
Or direct lamp holder for other voltages

**KEY SWITCH****ARK (Key switch)**

- Rated voltage: 500V a.c. 50/60Hz
- Rated current: 5A 250V 50/60Hz
- Applying categories: AC-12, AC-13, AC-14, AC-15
- Insulation resistance: 100M Ω min
- Dielectric strength: 2000V a.c. for 1min
- Colours: Red, Green or Yellow

**EMERGENCY PUSHBUTTON HEADS****ARE-3B (Momentary)**

- Cutout $\varnothing 22$ mm
- Rated voltage: 500V a.c. 50/60Hz
- Rated current: 5A 250V 50/60Hz
- Applying categories: AC-12, AC-13, AC-14, AC-15
- Insulation resistance: 100M Ω min
- Dielectric strength: 2000V a.c. for 1min
- Colours: Red

**ARE-4B (Momentary)****ARE-4P (Push Lock, Pull Reset)**

- Cutout $\varnothing 22$ mm
- Rated voltage: 500V a.c. 50/60Hz
- Rated current: 5A 250V 50/60Hz
- Applying categories: AC-12, AC-13, AC-14, AC-15
- Insulation resistance: 100M Ω min
- Dielectric strength: 2000V a.c. for 1min
- Colours: Red, Green, Yellow, Blue or White



AR series controlling switch, it is possible to apply 2 types ($\varnothing 22$ / $\varnothing 25$) panel cutout dimension and in case of using the guide bracket, it is even possible to use it with the $\varnothing 30$ hole. Various functions and designs have made the selection choice wider and attachment and detachment of the actuator/switch part became very simple.

ARE-6B (Momentary)**ARE-6P (Push lock, Pull reset)**

- Cutout $\varnothing 22\text{mm}$
- Rated voltage: 500V a.c. 50/60Hz
- Rated current: 5A 250V 50/60Hz
- Applying categories: AC-12, AC-13, AC-14, AC-15
- Insulation resistance: 100M Ω min
- Dielectric strength: 2000V a.c. for 1min
- Colours: Red

**TURN RESET EMERGENCY PUSHBUTTON HEADS****ARE-3R (Push Lock, Turn Reset)**

- Cutout $\varnothing 22\text{mm}$
- Rated voltage: 500V a.c. 50/60Hz
- Rated current: 5A 250V 50/60Hz
- Applying categories: AC-12, AC-13, AC-14, AC-15
- Insulation resistance: 100M Ω min
- Dielectric strength: 2000V a.c. for 1min
- Colours: Red

**ARE-4R (Push Lock, Turn Reset)**

- Cutout $\varnothing 22\text{mm}$
- Rated voltage: 500V a.c. 50/60Hz
- Rated current: 5A 250V 50/60Hz
- Applying categories: AC-12, AC-13, AC-14, AC-15
- Insulation resistance: 100M Ω min
- Dielectric strength: 2000V a.c. for 1min
- Colours: Red

**ARE-6R (Push Lock, Turn Reset)**

- Cutout $\varnothing 22\text{mm}$
- Rated voltage: 500V a.c. 50/60Hz
- Rated current: 5A 250V 50/60Hz
- Applying categories: AC-12, AC-13, AC-14, AC-15
- Insulation resistance: 100M Ω min
- Dielectric strength: 2000V a.c. for 1min
- Colours: Red

**KEY RESET EMERGENCY PUSHBUTTON HEADS****ARE-4K (Push lock, Key Reset)**

- Cutout: $\varnothing 22\text{mm}$
- Rated voltage: 500V a.c. 50/60Hz
- Rated current: 5A 250V 50/60Hz
- Applying categories: AC-12, AC-13, AC-14, AC-15
- Insulation resistance: 100M Ω min
- Dielectric strength: 2000V a.c. for 1min
- Colours: Red

**ARE-6K (Push Lock, Key Reset)**

- Cutout: $\varnothing 22\text{mm}$
- Rated voltage: 500V a.c. 50/60Hz
- Rated current: 5A 250V 50/60Hz
- Applying categories: AC-12, AC-13, AC-14, AC-15
- Insulation resistance: 100M Ω min
- Dielectric strength: 2000V a.c. for 1min
- Colours: Red



SMA1 (28mm Flat) / **SMA2** (28mm Recessed)

PIEZO SWITCHES

NON ILLUMINATED

Touch Metal Piezo Switch, 22mm mounting diameter, PG-16 thread, 28mm flat or recessed actuation area. Metal housings are milled, one piece construction and mounted with a nut. Aluminum housings are available in Silver, Red, Black, Green, Gold or Blue anodization.

- Switch Function – N.O. Momentary
- Switch Voltage – 0-24 AC/DC
- Switching Current – 0.2A std (0.5A option)
- Rated Breaking Capacity – 1W
- Operating Cycles – >50,000,000
- Switch Resistance OFF – > 5 MΩ
- Switch Resistance ON – < 20 Ω
- Capacity – 30 pF
- Pulse Duration -125-300mS
- Contact Configuration – Free polarity

**SBS1** (24mm Flat) / **SBS2** (24mm Recessed)

Touch Metal Piezo Switch, 19mm mounting diameter, M19x1 thread, 24mm flat or recessed actuation area. Metal housings are milled, one piece construction and mounted with a nut. Aluminum housings are available in Silver, Red, Black, Green, Gold or Blue anodization.

- Switch Function – N.O. Momentary
- Switch Voltage – 0-24V AC/DC
- Switching Current – 0.2A std (0.5A option)
- Rated Breaking Capacity – 1W
- Operating Cycles – >50,000,000
- Switch Resistance OFF – > 5 MΩ
- Switch Resistance ON – < 20 Ω
- Capacity – 30 pF
- Pulse Duration -125-300mS
- Contact Configuration – Free polarity

**SMF1** (18mm Flat) / **SMF2** (18mm Recessed)**SMF4** (21x21 Recessed) / **SMF5** (22mm flat)**SMF6** (19 mm Flat)

Touch Metal Piezo Switch, 16mm/18mm mounting diameter, M16x1/M18x1 thread, 18/19/22/21x21mm round/square flat or recessed actuation area. Metal housings are milled, one piece construction and mounted with a nut. Aluminum housings are available in Silver, Red, Black, Green, Gold or Blue anodization.

- Switch Function – N.O. Momentary
- Switch Voltage – 0-24 AC/DC
- Switching Current – 0.2A std (0.5A option)
- Rated Breaking Capacity – 1W
- Operating Cycles – >50,000,000
- Switch Resistance OFF – > 5 MΩ
- Switch Resistance ON – < 20 Ω
- Capacity – 30 pF
- Pulse Duration -125-300mS
- Contact Configuration – Free polarity

**SML1** (28mm Flat) / **SML2** (28mm Recessed)

Dot Illuminated

Touch Metal Piezo Switch, 22mm mounting diameter, PG-16 thread, 28mm flat or recessed actuation area, point illuminated with single or bi-color LEDs (5, 12 or 24V). Metal housings are milled, one piece construction and mounted with a nut. Aluminum housings are available in Silver, Red, Black, Green, Gold or Blue anodization.

- Switch Function – N.O. Momentary
- Switch Voltage – 0-24 AC/DC
- Switching Current – 0.2A std (0.5A option)
- Rated Breaking Capacity – 1W
- Operating Cycles – >50,000,000
- Switch Resistance OFF – > 5 MΩ
- Switch Resistance ON – < 20 Ω
- Capacity – 30 pF
- Pulse Duration -125-300mS
- Contact Configuration – Free polarity



SBR1(25mm flat) / **SBR2**(25mm recessed)

PIEZO SWITCHES

RING ILLUMINATED

Touch Metal Piezo Switch, 22mm mounting diameter 22×1.5mm thread, 25mm flat or recessed actuation area, ring illuminated with multi-color RGB LEDs (12 or 24V). Metal housings are milled, one piece construction and mounted with a nut. Aluminum housings are available in Silver, Red, Black, Green, Gold or Blue anodization.

- Switch Function – N.O. Momentary
- Switch Voltage – 0-24V AC/DC
- Switching Current – 0.2A std (0.5A option)
- Rated Breaking Capacity – 1W
- Operating Cycles – >50,000,000
- Switch Resistance OFF – > 5 MΩ
- Switch Resistance ON – < 20 Ω
- Capacity – 30 pF
- Pulse Duration -125-300mS
- Contact Configuration – Free polarity

**SBR3**(31mm flat) / **SBR4**(31mm recessed)

Touch Metal Piezo Switch, 27mm mounting diameter 27×1.5mm thread, 31mm flat or recessed actuation area, ring illuminated with multi-color RGB LEDs (12 or 24V). Metal housings are milled, one piece construction and mounted with a nut. Aluminum housings are available in Silver, Red, Black, Green, Gold or Blue anodization.

- Switch Function – N.O. Momentary
- Switch Voltage – 0-24V AC/DC
- Switching Current – 0.2A std (0.5A option)
- Rated Breaking Capacity – 1W
- Operating Cycles – >50,000,000
- Switch Resistance OFF – > 5 MΩ
- Switch Resistance ON – < 20 Ω
- Capacity – 30 pF
- Pulse Duration -125-300mS
- Contact Configuration – Free polarity

**SBA1**.(Flat) / **SBA2**.(Recessed)

Special Function

Touch Metal Piezo Switch, 22mm mounting diameter, PG-16 thread, 28mm flat or recessed actuation area with either continuous (SBA1/2C) or toggle (SBA1/2T) function. Metal housings are milled, one piece construction and mounted with a nut. Aluminum housings are available in Silver, Red, Black, Green, Gold or Blue anodization.

- Switch Function SBA1C Continuous N.O. up to 30sec std.
- Switch Function SBA1T Toggle On/Off Alternating
- Switch Voltage – 1-24V AC/DC
- Switching Current – 0.2A std (0.5A option)
- Rated Breaking Capacity – 1W
- Operating Cycles – >50,000,000
- Switch Resistance OFF – > 5 MΩ
- Switch Resistance ON – < 20 Ω
- Capacity – 30 pF
- Contact Configuration – Free polarity

**SBF1**.(Flat) / **SBF2**.(Recessed)

Touch Metal Piezo Switch, 18.6mm mounting diameter, PG-11 thread, 22mm flat actuation area with either continuous (SBF1/2C) or toggle (SBF1/2T) function. Metal housings are milled, one piece construction and mounted with a nut. Aluminum housings are available in Silver, Red, Black, Green, Gold or Blue anodization.

- Switch Function SBF1C Continuous N.O. up to 30sec std.
- Switch Function SBF1T Toggle On/Off Alternating
- Switch Voltage – 1-24V AC/DC
- Switching Current – 0.2A std (0.5A option)
- Rated Breaking Capacity – 1W
- Operating Cycles – >50,000,000
- Switch Resistance OFF – > 5 MΩ
- Switch Resistance ON – < 20 Ω
- Capacity – 30 pF
- Contact Configuration – Free polarity





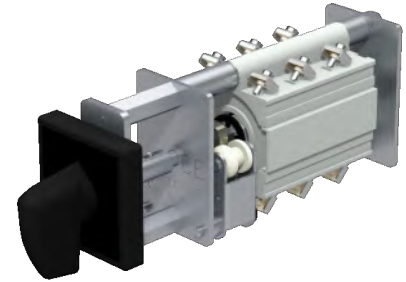
S - Normally Stock
L - Limited Stock
O - Ex Order

COMETRIC
Specialized rotary and control switches

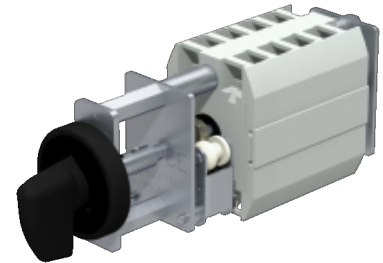
FRMC 6 (Miniature Control Switch)**FRMC 6 (Key Operated Switch)**

The FRMC 6 series miniature switches are used in all types of auxiliary circuits to connect and disconnect relays, measuring instrument, etc... Thanks to the special construction features they can also be used in hostile environmental and climatic conditions. The limited dimensions make for minimal occupation of space both inside and on the front of the panel.

- Available in Spring Return or Stay-put Positions.
 - Self-Cleaning Blade Wiping Action Contacts System, suitable for being used also in highly aggressive environments.
 - Shocks and Vibrations Proof, due to the contacts design.
 - Silver (STANDARD) or Gilded plated contacts.
 - High Mechanical strength, main shaft, frame and plate made in steel.
 - High Resistance Electrolytic treatment of the ferrous components suitable for Tropical Applications.
 - Terminals Screws with easy access from the rear of the Switch.
 - Can have from 2 to 8 positions Fixed or with automatic return.
 - Up to 12 Packets of contacts can be assembled.
 - Suitable for Pin Lugs – fork and Ring type Terminals.
- Key Operated Specific features:
- This is used when it is essential to prevent activation by non-authorized staff.
 - Up to 12 packets of contacts can be assembled with various key extraction systems.
 - Equipped with RONIS lock available all with the same numbering, all with different numbering or different in groups.

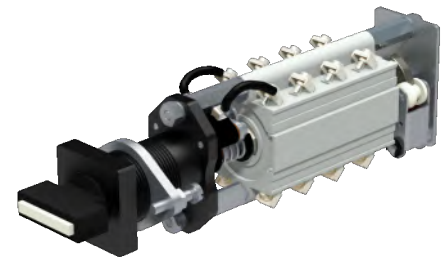
**FRMC 6 IP20 (Finger Proof protection)**

- Available as Miniature Control Switch or Key Operated Switch.
- 48x48mm front plate variant available for all models.
- Self-Cleaning Blade Wiping Action Contacts System, suitable for being used also in highly aggressive environments.
- Shocks and Vibrations Proof, due to the contacts design.
- IP20 Finger Proof terminals in According to standard IEC 60529.
- High Mechanical strength, main shaft, frame and plate made in steel.
- Terminals Screws with easy access from the rear of the Switch.

**FRMM 6 (Miniature Discrepancy Control Switch)**

These have the same function as the FRM10 discrepancy switches but are used with low currents and voltages. They are easy to adapt to the various mosaic systems. The limited dimensions make for minimal occupation of space both inside and on the front of the panel.

- Turn - Push to Turn
- The luminous signal is provided by an incandescent bulb or LED with a BA7s bayonet connector in various colours (white, yellow, red, green or the colour to order).
- Self-Cleaning Blade Wiping Action Contacts System, suitable for being used also in highly aggressive environments.
- Shocks and Vibrations Proof, due to the contacts design.
- High Mechanical strength, main shaft, frame and plate made in steel.
- High Resistance Electrolytic treatment of the ferrous components suitable for Tropical Applications.
- Terminals Screws with easy access from the rear of the Switch.

DISCREPANCY SWITCH**FRMM 6 IP20 (Finger Proof protection)**

- Turn - Push to Turn
- Self-Cleaning Blade Wiping Action Contacts System, suitable for being used also in highly aggressive environments.
- Shocks and Vibrations Proof, due to the contacts design.
- IP20 Finger Proof terminals in According to standard IEC 60529.
- High Mechanical strength, main shaft, frame and plate made in steel.
- High Resistance Electrolytic treatment of the ferrous components suitable for Tropical Applications.
- Terminals Screws with easy access from the rear of the Switch.

FRMM 6 IP20 (Opaline Handle increased visibility)

R16 SERIES



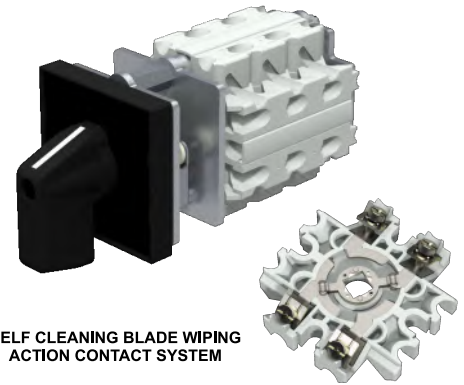
S - Normally Stock
L - Limited Stock
O - Ex Order

COMELETRIC
Specialized rotary and control switches

CONTROL SWITCH

The Control switch series "R16" keep the same features of the previous models Comeletric, but in a smaller size. The small size of the Control Switch allow the fixing even in applications where there's a minimum depth.

- Available in Spring Return or Stay-put Positions.
- From 2 to 8 position Stay put or Spring return Type.
- Can be Mounted up 23 Decks of Contacts.
- Self-Cleaning Blade Wiping Action Contacts System, suitable for being used also in highly aggressive environments.
- Shocks and Vibrations Proof, due to the contacts design.
- IP20 Finger Proof terminals in According to standard IEC 60529.
- High Mechanical strength, main shaft , frame and plate made in steel.
- High Resistance Electrolytic treatment of the ferrous components suitable for Tropical Applications.
- Easy access to the Screws of Each terminals even when the Switch is Wired , for the maintenance operations.



SELF CLEANING BLADE WIPING ACTION CONTACT SYSTEM

R20 SERIES

Control switch with IP20 protected terminal, easy access to the contacts during wiring operations. It summarizes the best features of oldest switches FR10 and FR10 Ip20. Thermal Current (Ith) 25 Ampere. They are easy to adapt to the various mosaic systems. The limited dimensions make for minimal occupation of space both inside and on the front of the panel.

- Available in Spring Return or Stay-put Positions.
- It can have from 2 to 8 positions fixed or with automatic return.
- It may be supplied with frontplate size 48X48mm (Q4) or 64X64mm (Q7).
- Self-Cleaning Blade Wiping Action Contacts System, suitable for being used also in highly aggressive environments.
- Shocks and Vibrations Proof, due to the contacts design.
- IP20 Finger Proof terminals in According to standard IEC 60529.
- High Mechanical strength, main shaft , frame and plate made in steel.
- High Resistance Electrolytic treatment of the ferrous components suitable for Tropical Applications.
- Easy access to the Screws of Each terminals even when the Switch is Wired , for the maintenance operations.

CONTROL & LOAD SWITCH



SELF CLEANING BLADE WIPING ACTION CONTACT SYSTEM

R10 SERIES

R10 control and selector switch is the latest innovative COMELETIC product. The slim design of its body contact makes it ideal for fitting in panels, control and driver desks or any other narrow electrical device where a little space is available , Wiring connections are possible with pins, forks, as well as ring type cable lugs. By positioning the CLIP, IP20 protection degree is fully guaranteed.

- Self-Cleaning Blade Wiping Action Contacts System, suitable for being used also in highly aggressive environments.
- Shocks and Vibrations Proof, due to the contacts design.
- IP20 Finger Proof terminals in According to standard IEC 60529.
- High Mechanical strength, main shaft , frame and plate made in steel.
- High Resistance Electrolytic treatment of the ferrous components suitable for Tropical Applications.
- Easy access to the Screws of Each terminals even when the Switch is Wired , for the maintenance operations (Oily when lateral wiring is used).

CONTROL & SELECTOR SWITCH

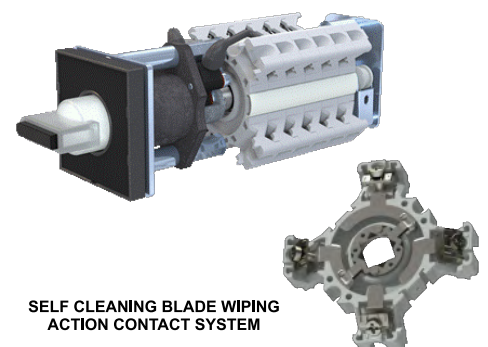


SELF CLEANING BLADE WIPING ACTION CONTACT SYSTEM

DR20 SERIES

- Self-Cleaning Blade Wiping Action Contacts System, suitable for being used also in highly aggressive environments.
- Shocks and Vibrations Proof, due to the contacts design.
- IP20 Finger Proof terminals in According to standard IEC 60529.
- High Mechanical strength, main shaft , frame and plate made in steel.
- High Resistance Electrolytic treatment of the ferrous components suitable for Tropical Applications.
- Terminals Screws with easy access from the rear of the Switch.
- Easy access to the Screws of Each terminals even when the Switch is Wired , for the maintenance operations.

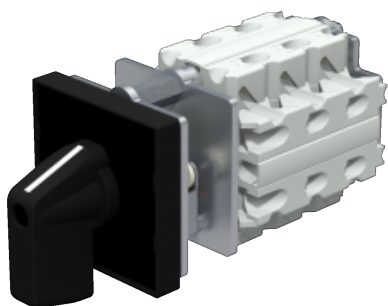
DISCREPANCY SWITCH



SELF CLEANING BLADE WIPING ACTION CONTACT SYSTEM



S - Normally Stock
L - Limited Stock
O - Ex Order



R16 - CONTROL SWITCH



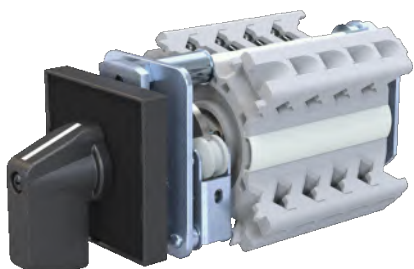
SELF CLEANING BLADE WIPING
ACTION CONTACT SYSTEM



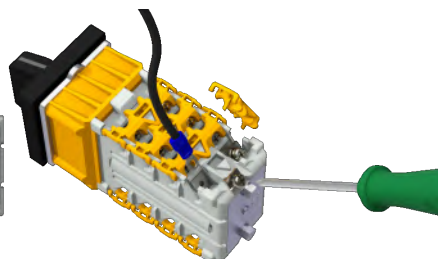
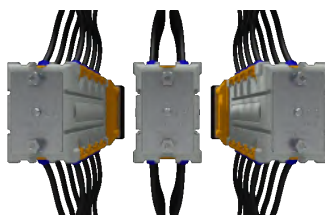
R10 - CONTROL & SELECTOR SWITCH



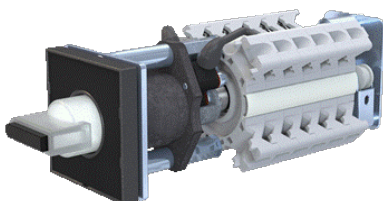
SELF CLEANING BLADE WIPING
ACTION CONTACT SYSTEM



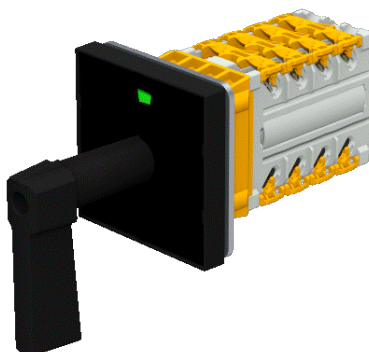
R20 - CONTROL & LOAD SWITCH



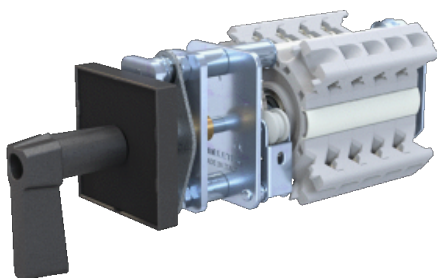
R10 - KEY OPERATED SWITCH



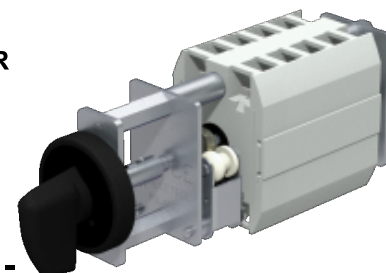
DR20 - DISCREPANCY SWITCH



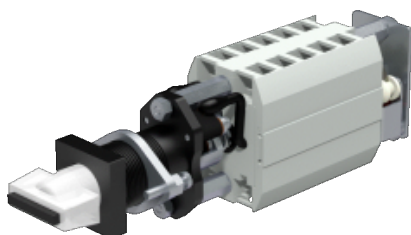
R10 - SPRING RETURN LAST POSITION MECHANICAL INDICATOR



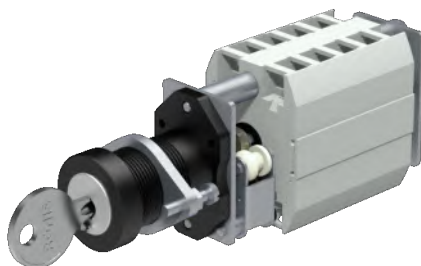
R20 - PUSH OR PULL OPERATED SWITCH



FRMC6 IP20 - MINIATURE CONTROL SWITCH



FRMM6 IP20 - MINIATURE CONTROL SWITCH



FRMC6 IP20 - KEY OPERATED SWITCH



R20 - PADLOCKABLE CONTROL & LOAD SWITCH



S - Normally Stock
L - Limited Stock
O - Ex Order

COMELETIC
Specialized rotary and control switches

Wing Type 48x48mm



CODE	COLOR		
	HANDLE	F.PLTE	HOLDER
W002	■	■	■
W006	■	■	■
W042	■	■	■
W022	■	■	■
W018	■	■	■

Wing Type 64x64mm



CODE	COLOR		
	HANDLE	F.PLTE	HOLDER
W010	■	■	■
W014	■	■	■
W044	■	■	■
W030	■	■	■
W026	■	■	■

Small Pistol Grip Type 48x48mm



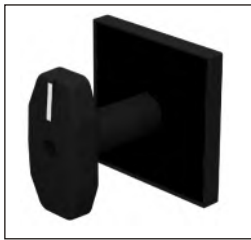
CODE	COLOR		
	HANDLE	F.PLTE	HOLDER
Y002	■	■	■
Y006	■	■	■
YXXX	■	■	■
Y022	■	■	■
Y018	■	■	■

Pistol Grip Type 48x48mm



CODE	COLOR		
	HANDLE	F.PLTE	HOLDER
P002	■	■	■
P006	■	■	■
PXXX	■	■	■
P022	■	■	■
P018	■	■	■

Oval Type 64x64mm



CODE	COLOR		
	HANDLE	F.PLTE	HOLDER
V010	■	■	■
V214	■	■	■
VXXX	■	■	■
V030	■	■	■
V026	■	■	■

Small Oval Type 48x48mm



CODE	COLOR		
	HANDLE	F.PLTE	HOLDER
N002	■	■	■
N006	■	■	■
N033	■	■	■
N022	■	■	■
N018	■	■	■

Pistol Grip Type 64x64mm



CODE	COLOR		
	HANDLE	F.PLTE	HOLDER
P010	■	■	■
P014	■	■	■
PXXX	■	■	■
P030	■	■	■
P026	■	■	■

Oval Type 48x48mm



CODE	COLOR		
	HANDLE	F.PLTE	HOLDER
V002	■	■	■
V006	■	■	■
V035	■	■	■
V022	■	■	■
V018	■	■	■

Small Pistol Grip Type 64x64mm



CODE	COLOR		
	HANDLE	F.PLTE	HOLDER
Y010	■	■	■
Y011	■	■	■
Y033	■	■	■
Y030	■	■	■
Y026	■	■	■

Padlockable Type 48x48mm



CODE	COLOR			
	HANDLE	F.PLTE	HOLDER	BARREL
L002	■	■	■	■
L013	■	■	■	■
L014	■	■	■	■
L015	■	■	■	■
L016	■	■	■	■

Small Padlockable Type 48x48mm



CODE	COLOR			
	HANDLE	F.PLTE	HOLDER	BARREL
L011	■	■	■	■
L017	■	■	■	■
L018	■	■	■	■
L019	■	■	■	■
L020	■	■	■	■

JOHANNESBURG



MIMIC COMPONENTS

ELECTRICAL & ELECTRONIC
WHOLESALE DISTRIBUTORS
SOUTHERN AFRICA

Address

5 Ramsay Street, Booyens,
2091 Johannesburg,
South Africa

P.O. Box 38493 Booyens,
2016 South Africa

Telephone

Switchboard: +27 (0)11- 689-5700
Fax: +27 (0)11- 493-8821

Email: sales@mimic.co.za

Website: www.mimic.co.za

CAPE TOWN



MIMIC CAPE

ELECTRICAL & ELECTRONIC
WHOLESALE DISTRIBUTORS
SOUTHERN AFRICA

Address

Unit 41A, Stella Park,
57 Stella Road, Montague Gardens,
Cape Town, 7441, South Africa

PO. Box 36955 Chempet,
7442 South Africa

Telephone

Switchboard: +27(0) 21-551-8185
Facsimile: +27(0) 21-551-8169

Email: anje@mimics.co.za

Website: www.mimic.co.za



MIMIC COMPONENTS sales@mimic.co.za www.mimic.co.za TEL: (011) 689-5700
5 Ramsay Street, Booyens 2091, Johannesburg P.O. Box 38493, Booyens 2016, Johannesburg, South Africa FAX: (011) 493-8821



MIMIC CAPE anje@mimics.co.za www.mimic.co.za TEL: +27(0)21-551-8185 FAX: +27(0)21-551-8169
Unit 41A, Stella Park, 57 Stella Road, Montague Gardens, Cape Town 7441. PO Box 36955 Chempet 7442, South Africa